

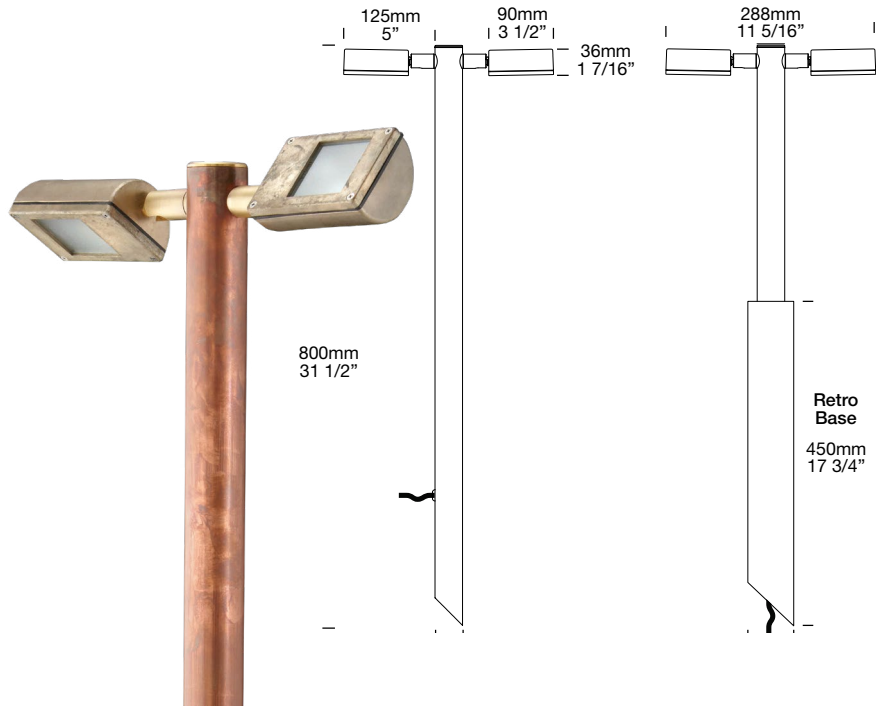
Twin Border Light with PURE LED

PROJECT:
TYPE:
SOURCE:
NOTES:

SPECIFICATIONS



LED Chip	2 x Cree XPG-3 Plug and Play field replaceable LED board
Luminaire Output* Per Head	120 Lumens @ 700mA (2 watts)
Lumens Per Watt*	60 Lumens minimum @ 2 watts
LED Life Expectancy	50,000 hours L70
CRI (3000K)	90+
Colour Temperatures	2700K, 3000K, 4000K
Beam Angles	100 Degree
Ingress Protection	IP56/IP66
Warranty	Electronics = 5 years Stainless Steel /Copper Body = 10 years Solid Bronze Head = 10 Years
Standards	AS/NZS 61046 cUL 1838, 2108 CE



*Delivered from the Luminaire with unobstructed beam

PRODUCT CONFIGURATION

Please fill in appropriate codes into boxes provided

Cat. No. BLT/L

Luminaire	Power	Material/Finish	Beam	Colour	Accessories	
BLT/L						
S	700mA Input, Series Wired 4W	ALUMINIUM	EBK BLACK	100 100°	2 2700K	FM FLANGE MOUNT 38mm
D3	12VAC, 350mA Parallel Wired 2W		EBZ BRONZE		3 3000K	FM90 FLANGE MOUNT 90mm
D7	12VAC, 700mA Parallel Wired 4W		EOGR OLIVE GREEN		4 4000K	LKN LOCKING KNUCKLE
D24	24VDC Input, Parallel Wired		EWH WHITE			LENSBLC CLEAR LENS
R	110/240V Input, Retro, Parallel Wired		EWB WHITE BIRCH			EP ELECTRO POLISH *Only available for Stainless Steel
			EDG DARK GREY			
			ESTAR SILVER STAR			
			ECT CORTEN			
			COP Solid Copper (Solid Bronze Head)			
			SS Stainless Steel			

S - Series Remote Driver Power Supply: Constant current driver REQUIRED - NOT SUPPLIED Fixture Input: Individual fixtures require 6Vf @ 700mA maximum
D3 D7 - 12VAC Input Power Supply: Line/Mains to 12VAC Transformer REQUIRED - NOT SUPPLIED Fixture Input: 12VAC, 2-4 watt (driver included) Fixture Output: D3 = 6Vf @ 350mA 1W D7 = 6Vf @ 700mA 2W
D24 - 24VDC Driver Fixture Input: 24VDC 4 watt (driver included) Fixture Output: 6vdc, 700mA constant current (non-dimming)
R - 110/240V Retro Driver Fixture Input: 120/240VAC, 4 watt (driver included) Fixture Output: 6vdc, 700mA constant current (non-dimming)

OTHER LAMP OPTIONS:
 BLT/H - G4 Halogen 12V Lamp
 BLT/GL - G4 LED Retrofit Halogen 12V Lamp (lamps vary by market - please refer to supplier for details)

Additional Comments:

*Due to continued product enhancements, specifications may change without notification.

LUMINAIRE CONSTRUCTION

CNC machined from one of the following metals:

Aluminium

Head: Virgin high corrosion resistant CC401 low copper aluminium alloy, with chromate substrate and high UV resistant polyester powder coat.

Pole: Aluminium 38mm (1½") tube.

Colours: Black, Bronze, Silver Star, White, White Birch, Olive Green, Dark Grey, Corten.

Copper/Solid Bronze

Head: Cast from LG2 bronze.

Pole: Solid copper 38mm (1½") tube.

316 Stainless Steel

Head: Cast from 316 stainless steel.

Pole: 316 stainless steel 38mm (1½") tube.

Knuckles:

Aluminium and Copper luminaires - 360° rotation and 0-90° elevation, solid brass with anti rust spring.

Stainless Steel luminaires - 360° rotation and 0-90° elevation, full stainless steel construction.

Lens:

3mm frosted shatter resistant glass. Lifetime Warranty.

Gaskets:

Silicone, iron impregnated 220°C (428°F).

Mounting

The pole 800mm (31½") is directly mounted into the earth or concrete. Flange Mount option is available for hard surfaces.

Cable:

Water resistant rubber SWOOJ cable with HUNZA™ Anti-Syphon™ barrier system

Luminaire Weight:

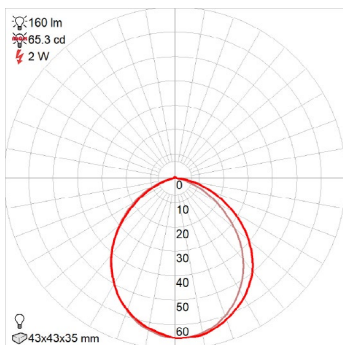
Low voltage
 Alum: 1.100kg (2lb 6oz)
 Cop/SBZ: 2.700kg (5lb 15oz)
 SS: 2.400kg (5lb 4oz)
 Retro™
 Alum: 2.400kg (5lb 4oz)
 Cop/SBZ: 4.200kg (9lb 4oz)
 SS: 3.700kg (8lb 2oz)



BEAM ANGLES

IES files available for download:

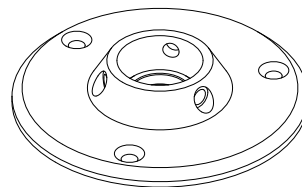
hunzalighting.com/downloads



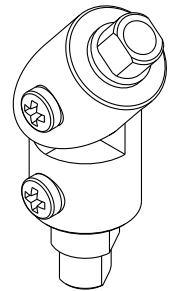
FWHM°

*Frosted Lens

ACCESSORIES



Flange Mount
 FM38 for Low Voltage
 FM90 for Retro



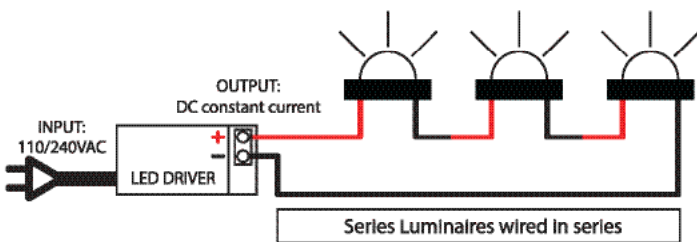
Locking Knuckle

WIRING GUIDE

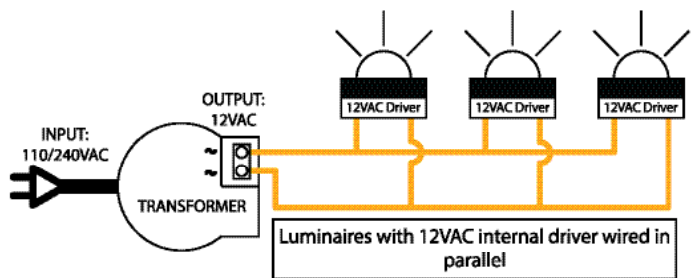
Available for download: hunzalighting.com/downloads

NOTE: Diagrams are a guide only, wire colours and polarity may change depending on fixture and country.

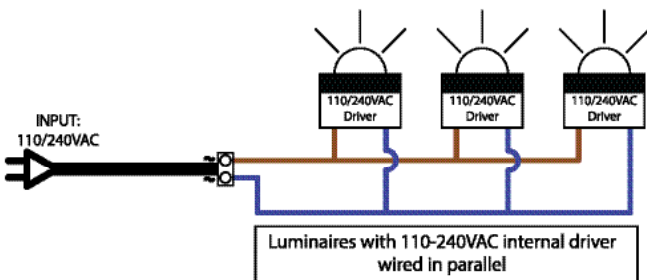
Series/Remote Driver



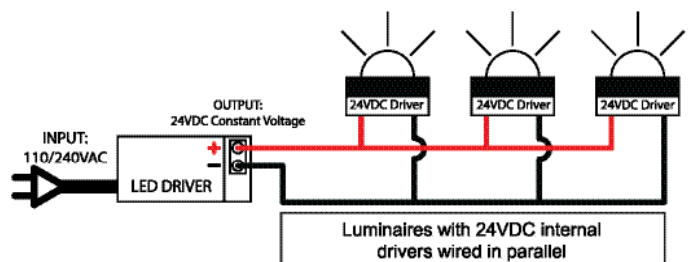
12VAC Integral Driver



110/240V Integral Driver



24VDC Integral Driver



*Due to continued product enhancements, specifications may change without notification.



HUNZA LIGHTING
 130 Felton Mathew Ave
 Saint Johns
 Auckland 1072
 New Zealand

Ph: +64-9-528-9471
hunza@hunza.co.nz
www.hunzalighting.com

INTERNATIONAL CONTACTS:
www.hunzalighting.com/contact

This document contains proprietary information of Hunza™. Its receipt or possession does not convey any rights to reproduce or disclose its content.